

Vehicle description

HIGH-PRESSURE WATER-CUTTING UNIT

Year of construction: 2020



- **Hammelmann** 2500 bar - 22 L/min high-pressure pump
- **HPP** 235 bar - 135 L/min High-pressure pump with 100 m 5/8“ flushing reel
- **Mechanical drive of the high-pressure pumps via an intermediate gearbox**
The intermediate gearbox can switch the 2500 bar and 235 bar pumps on/off separately.

High pressure system



High-pressure pump – Hammelmann

- 2500 bar 22 l/min
- Drive: mechanical via the intermediate gearbox
- Electronic overpressure monitoring
- Pressure infinitely variable

High-pressure system for driving the milling robot and for working with the water cutter.

The high-pressure pump is mounted vertically behind the cab on the left:

Winter protection

Compressed air connection with non-return valve for draining the high-pressure pump

High pressure system

PTC high-pressure pump

- Approx. 235 bar 135 l/min
- Drive: mechanical via the intermediate gearbox
- Electronic overpressure monitoring
- Pressure continuously adjustable

High-pressure system for sewer cleaning.

DEFCO Reel

- Rigidly mounted
- Reel is electrically driven



- Capacity 100 m (NW 16) flushing hose
- Incl. 80 m NW 5/8“(NW 16) flushing hose,
- Connection thread 1/2”

Vehicle case

Box body - BOX 20HY

- Upgrade with air conditioning
- Eberspächer heater
- Extendable ladder at the rear and side of the vehicle.

Compressed air

- Compressed air supply from the lorry chassis

Radio control

- Diesel engine start - stop
- Diesel engine speed adjustment
- High-pressure pump on - off

Operator room



Installed accessories:

- LED lighting with switch
- Console

Rear compartment



Reel MHR200

Cable - compressed air control of the robots

- 180 m hybrid robot cable
- Chrome steel drawer

Air compressor with filter and dryer

- With 20 m spring-loaded reel instead of 9.0 m

Voltage transformer with distribution box 115 V / 230 V, 3000 Watt

- Incl. battery, for operating the PC, cable reel and TV camera
- Operation without diesel engine possible for up to two hours
- Continuous operation with diesel engine at idle speed
- Can be connected to an external 230 V mains supply

Water tank - VPT 1,000

- Capacity 1,000 litres
- Level sensor
- Vertical tank
- Filter package
- Drain to the rear with ball valve and Storz C-coupling
- With automatic filling system

Water pump

12 V cleaning pump for sewer robots, hand cleaning, etc.

- With spring-loaded hose reel
- Manual gun

Robot R125

Robot R160 T3

Basic robot

Channel diameter 180-500 mm



- 500° rotation
- Air connection
- Angle sensor X-Y
- Rotation sensor
- Temperature monitoring

WJ180 T3 - UHP precision waterjet cutting system

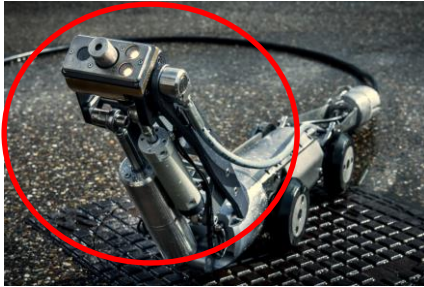
For R160 basic robot

Channel diameter 180-400 mm (without lifting unit)



- Up to 2200 bar
- Universal nozzle holder
- Nozzle rotation 100° LED Beleuchtung

WJ190 T3 - UHP precision linkage water cutting system
For R160 basic robot
Channel diameter 180-700 mm



- Up to 2200 bar
- Universal nozzle holder
- Nozzle rotation 100°
- LED lighting
- Continuously rotating camera

HA195 T1 - Milling and cutting system
For R160 basic robot
Channel diameter 180-700 mm

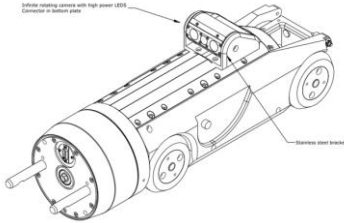


- LED lighting
- Continuously rotating camera

Robot R280 T1
Channel diameter from 250 mm

- 2500 bar Rotary feedthrough
- Air connection
- Angle sensor X-Y
- Rotation sensor
- Temperature monitoring

Camera attachment on R280



CTR250 is a rotary camera with light for the R280.

WJ280 T1 UHP precision water cutting system

For R280 basic robot

Channel diameter 250-1000 mm

- Up to 2500 bar
- Universal nozzle holder
- Nozzle rotation 100°
- LED lighting
- Continuously rotating camera

HA280 T1 milling and cutting system

For R280 basic robot

Channel diameter from 250 mm

- LED lighting
- Continuously rotating camera

CTR250 rotary camera

- Camera attachment with windscreen wiper
- The image can be switched between the mounted tool (water jet, milling cutter). This camera can therefore be used to look forwards and backwards

The camera is plugged in instead of the standard mounted plate and can also be removed if required

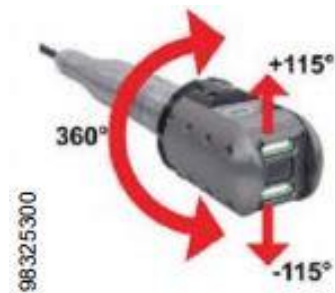
The R280 robot is prepared for the camera.

ZRK70 Camera

- Pan and rotate camera
- For mounting on robots or on push / pull push cable
- 100 m cable on reel

Advantage:

- Free inspection image compared to other systems



TRUCK CHASSIS:

Renault D 12 MED P4x2 250 E6

12 tonnes total weight
Wheelbase 3800 mm
